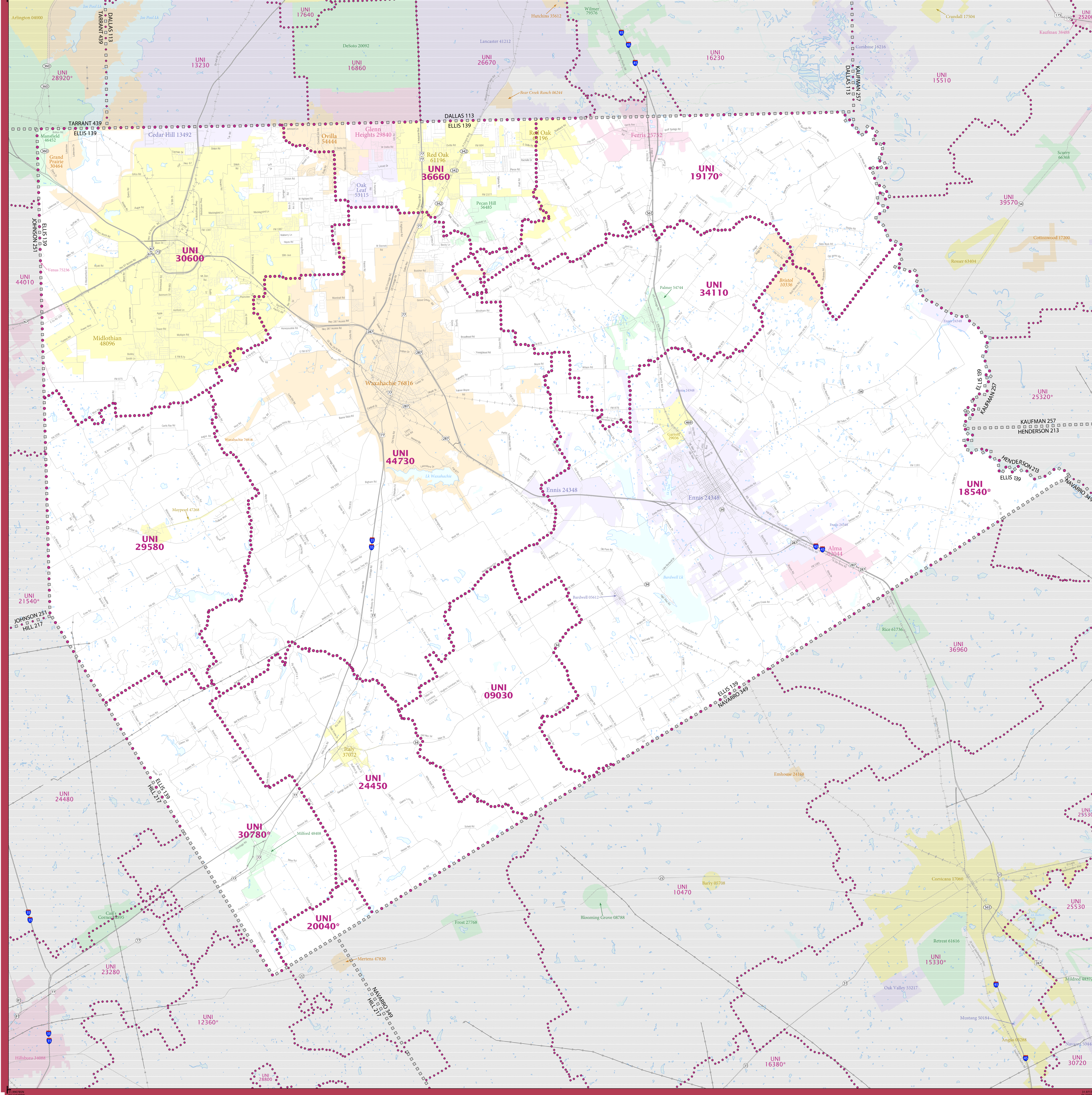


2020 CENSUS - SCHOOL DISTRICT REFERENCE MAP: Ellis County, TX



LEGEND

SYMBOL DESCRIPTION	SYMBOL	LABEL STYLE
International	☆☆☆☆☆	CANADA
Federal American Indian Reservation	██████████	L'ANSE RES 1880
Off-Reservation Trust Land	██████████	T1880
State American Indian Reservation	██████████	Tama Res 9400
Alaska Native Regional Corporation	+++++	NANA ANRC 52120
State (or statistically equivalent entity)		NEW YORK 36
County (or statistically equivalent entity)	□□□□□	ERIE 029
Minor Civil Division (MCD) ^{1,2}	○○○○○	Bristol town 07485
Consolidated City	○●○○○	MILFORD 47500
Incorporated Place ³	■	Davis 18100
Census Designated Place (CDP) ²	■	Incline Village 35100
Unified School District ⁴	●●●●●	UNI 0370 SEC 9965 ELM 02220
Secondary School District ⁴	—	
Elementary School District ⁴	—	

DESCRIPTION	SYMBOL	DESCRIPTION	SYMBOL
Interstate	—	Water Body	
U.S. Highway	—	Natural or State Park, Forest, or Recreation Area	
State Highway or State Road	—	Military	
Other Road	—	National or State Park, Forest, or Recreation Area	
Railroad	—	Inset Area	
Pipeline or Power Line	—	Outside Subject Area	
Ridge or Fence	—		
Navigable Boundary or Feature Not Elsewhere Classified	—		

Where international, state, county, and/or MCD boundaries coincide, the map shows the boundary symbol for only the highest-ranking of these boundaries.

Geographic area names are followed by either their FIPS or census code.

- MCD boundaries are shown in the following states in which some or all MCDs function as general-purpose governmental units: Connecticut, Illinois, Indiana, Kansas, Maine, Massachusetts, Michigan, Minnesota, Missouri, Nebraska, New Hampshire, New Jersey, New York, North Dakota, Ohio, Pennsylvania, Rhode Island, South Dakota, Vermont, and Wisconsin. (Note that Illinois and Nebraska have some counties covered by nongovernmental precincts and Missouri has most counties covered by nongovernmental townships.)
- A "*" following an MCD name denotes a false MCD. A "*" following a place name indicates that a false MCD exists with the same name and FIPS code as the place; the false MCD label is not shown.
- Place label color corresponds to the place fill color.
- A "*" following a label indicates that the school district is in more than one county.

Due to space limitations, some areas and features such as water bodies, parks, and roads may not be labeled.

SUBJECT AREA SCHOOL DISTRICTS ON MAP SHEET

TYPE	CODE	NAME
UNI	09030	Avlon Independent School District
UNI	18540	Ennis Independent School District
UNI	19170	Ferris Independent School District
UNI	20040	Frost Independent School District
UNI	24450	Holy Trinity Independent School District
UNI	29580	Maypearl Independent School District
UNI	30600	Midlothian Independent School District
UNI	30780	Milford Independent School District
UNI	34110	Palmer Independent School District
UNI	36660	Red Oak Independent School District
UNI	44730	Waxahachie Independent School District

All legal boundaries and names are as of January 1, 2020. The boundaries shown on this map are for Census Bureau statistical data collection and tabulation purposes only; their depiction and designation for statistical purposes does not constitute a determination of jurisdictional authority or rights of ownership or entitlement.

Geographic Vintage: 2020 Census (reference date: January 1, 2020)
 Data Source: U.S. Census Bureau's MA7/TIGER database (TIGER2020)
 Map Created by Geography Division: December 22, 2020

Projection: Albers Equal Area Conic
 Datum: NAD 83
 Spheroid: GRS 80
 1st Standard Parallel: 27 36 51
 2nd Standard Parallel: 34 43 24
 Central Meridian: -100 04 35
 Latitude of Projection's Origin: 25 50 13
 False Easting: 0
 False Northing: 0

United States Census 2020