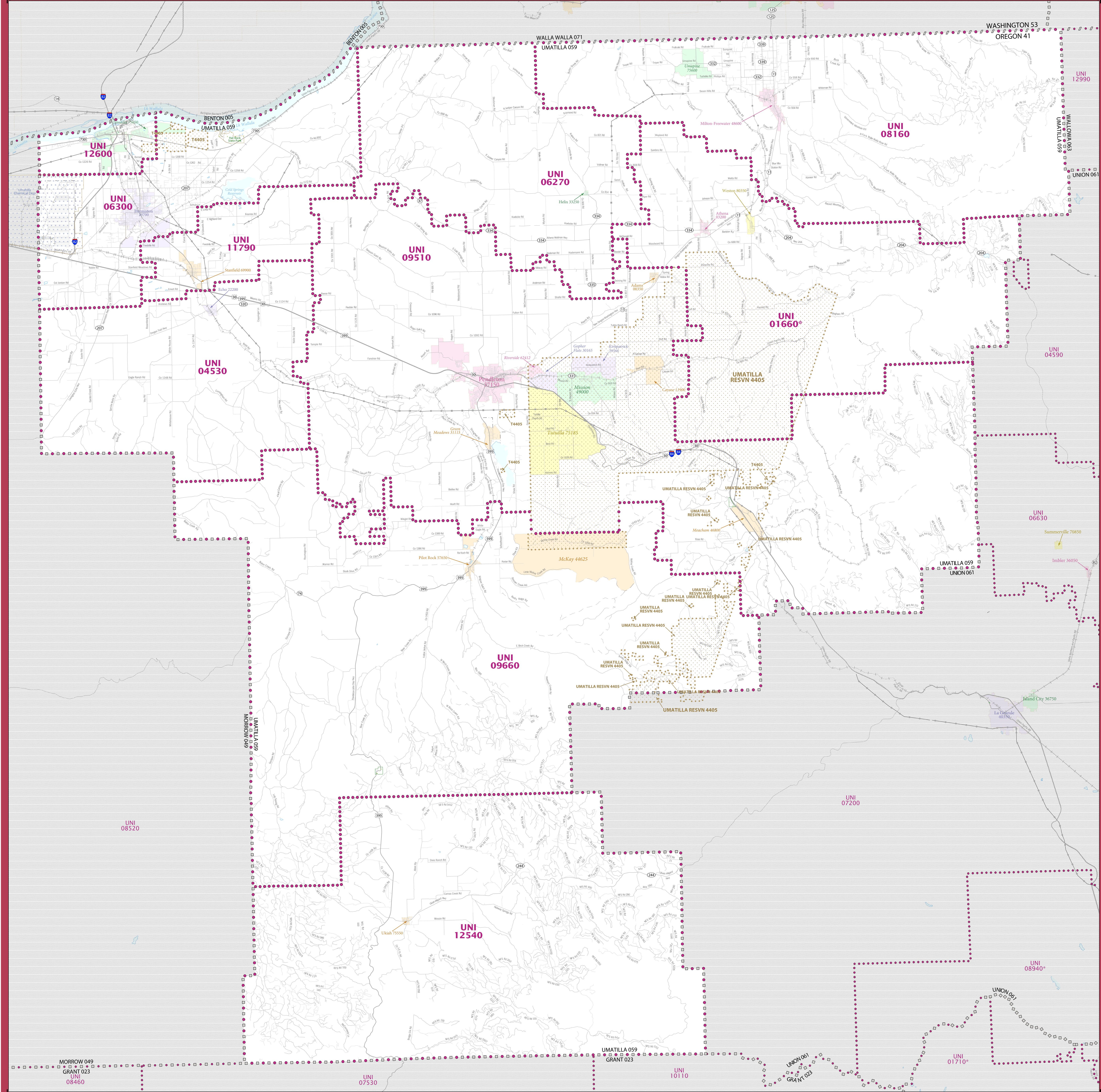


# 2020 CENSUS - SCHOOL DISTRICT REFERENCE MAP: Umatilla County, OR



LEGEND		
SYMBOL DESCRIPTION	SYMBOL	LABEL STYLE
International	☆☆☆☆	CANADA
Federal American Indian Reservation	[Dotted Pattern]	L'ANSE RES 1880
Off-Reservation Trust Land	[Dotted Pattern]	T1880
State American Indian Reservation	[Dotted Pattern]	Tama Res 9400
Alaska Native Regional Corporation	+++++	NANA ANRC 52120
State (or statistically equivalent entity)	[Dotted Pattern]	NEW YORK 36
County (or statistically equivalent entity)	[Dotted Pattern]	ERIE 029
Minor Civil Division (MCD) <sup>1,2</sup>	○○○○○	Bristol town 07485
Consolidated City	○●○○○	MILFORD 47500
Incorporated Place <sup>3,4</sup>	[Color Fill]	Davis 18100
Census Designated Place (CDP) <sup>2</sup>	[Color Fill]	Incline Village 35100
Unified School District <sup>4</sup>	[Color Fill]	UNI 03370
Secondary School District <sup>4</sup>	[Color Fill]	SEC 99965
Elementary School District <sup>4</sup>	[Color Fill]	ELM 02220

DESCRIPTION	SYMBOL	DESCRIPTION	SYMBOL
Interstate	[Blue Line]	Water Body	[Blue Area]
U.S. Highway	[Black Line]	Military	[Blue Line]
State Highway or State Road	[Black Line]	National or State Park, Forest, or Recreation Area	[Green Area]
Other Road	[Black Line]	Inset Area	[Green Area]
Railroad	[Black Line]	Outside Subject Area	[Grey Area]
Pipeline or Power Line	[Black Line]		
Ridge or Fence	[Black Line]		
Notable Boundary or Feature Not Elsewhere Classified	[Black Line]		

Where international, state, county, and/or MCD boundaries coincide, the map shows the boundary symbol for only the highest-ranking of these boundaries.  
Geographic area names are followed by either their FIPS or census code.

1 MCD boundaries are shown in the following states in which some or all MCDs function as general-purpose governmental units: Connecticut, Illinois, Indiana, Kansas, Maine, Massachusetts, Michigan, Minnesota, Missouri, Nebraska, New Hampshire, New Jersey, New York, North Dakota, Ohio, Pennsylvania, Rhode Island, South Dakota, Vermont, and Wisconsin. (Note that Illinois and Nebraska have some counties covered by nongovernmental precincts and Missouri has most counties covered by nongovernmental townships.)

2 A " " following an MCD name denotes a false MCD. A " " following a place name indicates that a false MCD exists with the same name and FIPS code as the place; the false MCD label is not shown.

3 Place label color corresponds to the place fill color.

4 A " " following a label indicates that the school district is in more than one county.

Due to space limitations, some areas and features such as water bodies, parks, and roads may not be labeled.

### OFF-RESERVATION TRUST LAND NAMES

14405 Umatilla

### SUBJECT AREA SCHOOL DISTRICTS ON MAP SHEET

TYPE	CODE	NAME
UNI	01600	Albion-Weston School District 291
UNI	04530	Echo School District 5
UNI	06270	Helix School District 1
UNI	08300	Hermiton School District 8
UNI	08160	Milton-Freewater School District 7
UNI	09510	Pendleton School District 16
UNI	09660	Pilot Rock School District 2
UNI	11790	Stanfield School District 61
UNI	12540	Ukiah School District 80
UNI	12600	Umatilla School District 6

All legal boundaries and names are as of January 1, 2020. The boundaries shown on this map are for Census Bureau's statistical data collection and tabulation purposes only; their depiction and designation for statistical purposes does not constitute a determination of jurisdictional authority or rights of ownership or entitlement.

Geographic Vintage: 2020 Census (reference date: January 1, 2020)  
Data Source: U.S. Census Bureau's MAINTIGR database (T4820)  
Map Created by Geography Division: December 18, 2020

U.S. DEPARTMENT OF COMMERCE U.S. Census Bureau

Projection: Albers Equal Area Conic  
Datum: NAD 83  
Spheroid: GRS 80  
1st Standard Parallel: 42 43 46  
2nd Standard Parallel: 45 34 55  
Central Meridian: -120 34 56  
Latitude of Projection's Origin: 41 59 44  
False Easting: 0  
False Northing: 0

Scale: 1:64,000

