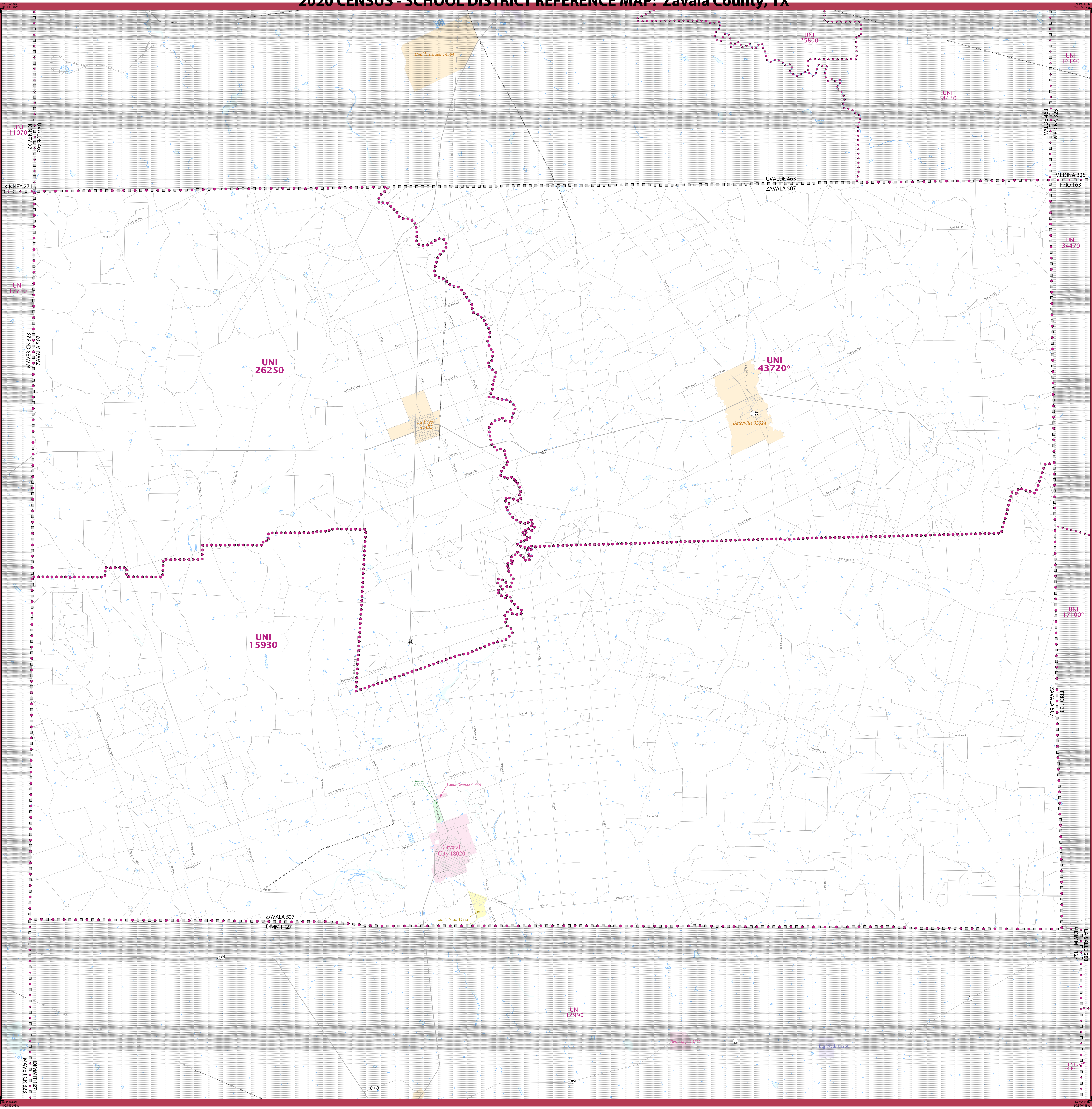


2020 CENSUS - SCHOOL DISTRICT REFERENCE MAP: Zavala County, TX



SYMBOL DESCRIPTION	SYMBOL	LABEL STYLE
International	☆☆☆☆	CANADA
Federal American Indian Reservation	■ ■ ■ ■ ■	L'ANSE RES 1880
Off-Reservation Trust Land	■ ■ ■ ■ ■	T1880
State American Indian Reservation	■ ■ ■ ■ ■	Tama Res 9400
Alaska Native Regional Corporation	+++++	NANA ANRC 52120
State (or statistically equivalent entity)		NEW YORK 36
County (or statistically equivalent entity)	□ □ □ □ □	ERIE 029
Minor Civil Division (MCD) <sup>1,2</sup>	○ ○ ○ ○ ○	Bristol town 07485
Consolidated City	● ● ● ● ●	MILFORD 47500
Incorporated Place <sup>2,3</sup>	■ ■ ■ ■ ■	Davis 18100
Census Designated Place (CDP) <sup>2</sup>	■ ■ ■ ■ ■	Incline Village 35100
Unified School District <sup>4</sup>	● ● ● ● ●	UNI 0370 SEC 99965
Secondary School District <sup>4</sup>	■ ■ ■ ■ ■	ELM 02220
Elementary School District <sup>4</sup>	■ ■ ■ ■ ■	

DESCRIPTION	SYMBOL	DESCRIPTION	SYMBOL
Interstate	—●—	Water Body	■ ■ ■ ■ ■
U.S. Highway	—[2]—	Military	■ ■ ■ ■ ■
State Highway or State Road	—(A)—	National or State Park, Forest, or Recreation Area	■ ■ ■ ■ ■
Other Road	—[A]—	Inlet Area	■ ■ ■ ■ ■
4WD Trail, Stairway, Alley, Walkway, or Ferry	—[A]—	Outside Subject Area	■ ■ ■ ■ ■
Railroad	—[A]—		
Pipeline or Power Line	—[A]—		
Ridge or Fence	—[A]—		
Natural Boundary or Feature Not Elsewhere Classified	—[A]—		

Where international, state, county, and/or MCD boundaries coincide, the map shows the boundary symbol for only the highest-ranking of these boundaries.

Geographic area names are followed by either their FIPS or census code.

1 MCD boundaries are shown in the following states in which some or all MCDs function as general-purpose governmental units: Connecticut, Illinois, Indiana, Kansas, Maine, Massachusetts, Michigan, Minnesota, Missouri, Nebraska, New Hampshire, New Jersey, New York, North Dakota, Ohio, Pennsylvania, Rhode Island, South Dakota, Vermont, and Wisconsin. (Note that Illinois and Nebraska have some counties covered by nongovernmental precincts and Missouri has most counties covered by nongovernmental townships.)

2 A " " following an MCD name denotes a false MCD. A " " following a place name indicates that a false MCD exists with the same name and FIPS code as the place; the false MCD label is not shown.

3 Place label color corresponds to the place fill color.

4 A " " following a label indicates that the school district is in more than one county.

Due to space limitations, some areas and features such as water bodies, parks, and roads may not be labeled.

**SUBJECT AREA SCHOOL DISTRICTS ON MAP SHEET**

TYPE	CODE	NAME
UNI	15930	Crystal City Independent School District
UNI	26250	La Pryor Independent School District
UNI	43720	Uvalde Consolidated Independent School District