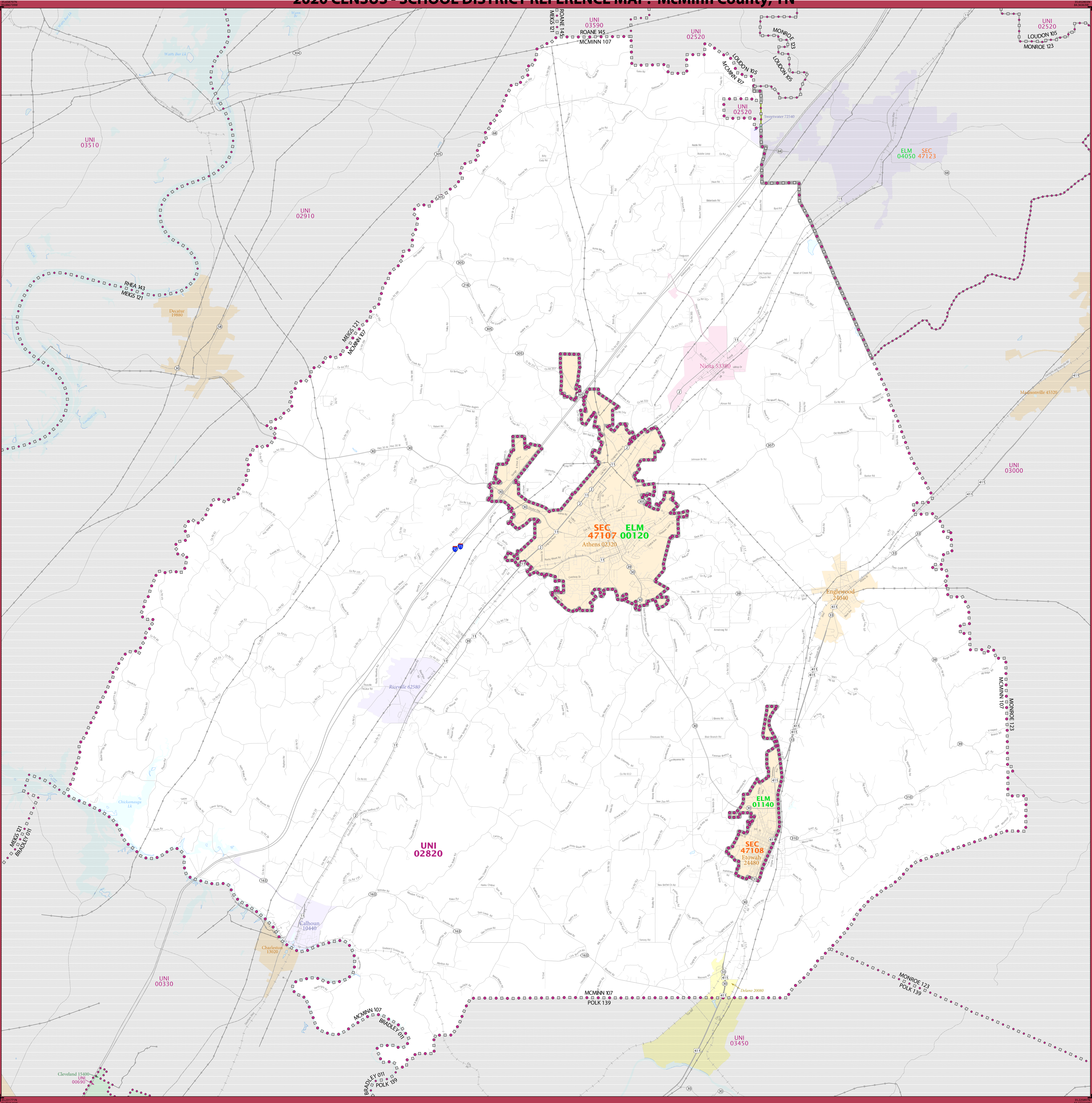


2020 CENSUS - SCHOOL DISTRICT REFERENCE MAP: McMinn County, TN



LEGEND	
SYMBOL DESCRIPTION	LABEL STYLE
International	☆☆☆☆☆ CANADA
Federal American Indian Reservation	L'ANSE RES 1880
Off-Reservation Trust Land	T1880
State American Indian Reservation	Tama Res 9400
Alaska Native Regional Corporation	NANA ANRC 52120
State (or statistically equivalent entity)	NEW YORK 36
County (or statistically equivalent entity)	ERIE 029
Minor Civil Division (MCD) <sup>1,2</sup>	Bristol town 07485
Consolidated City	MILFORD 47500
Incorporated Place <sup>2,3</sup>	Davis 18100
Census Designated Place (CDP) <sup>2</sup>	Incline Village 35100
Unified School District <sup>4</sup>	UNI 03370
Secondary School District <sup>4</sup>	SEC 99965
Elementary School District <sup>4</sup>	ELM 02220

DESCRIPTION	SYMBOL	DESCRIPTION	SYMBOL
Interstate		Water Body	
U.S. Highway		Military	
State Highway or State Road		National or State Park, Forest, or Recreation Area	
Other Road		Inset Area	
4WD Trail, Stairway, Alley, Walkway, or Ferry		Outside Subject Area	
Railroad			
Pipeline or Power Line			
Ridge or Fence			
Neighboring Boundary or Feature Not Elsewhere Classified			

Where international, state, county, and/or MCD boundaries coincide, the map shows the boundary symbol for only the highest-ranking of these boundaries.

Geographic area names are followed by either their FIPS or census code.

1 MCD boundaries are shown in the following states in which some or all MCDs function as general-purpose governmental units: Connecticut, Illinois, Indiana, Kansas, Maine, Massachusetts, Michigan, Minnesota, Missouri, Nebraska, New Hampshire, New Jersey, New York, North Dakota, Ohio, Pennsylvania, Rhode Island, South Dakota, Vermont, and Wisconsin. (Note that Illinois and Nebraska have some counties covered by nongovernmental precincts and Missouri has most counties covered by nongovernmental townships.)

2 A ' ' following an MCD name denotes a false MCD. A ' ' following a place name indicates that a false MCD exists with the same name and FIPS code as the place; the false MCD label is not shown.

3 Place label color corresponds to the place fill color.

4 A ' ' following a label indicates that the school district is in more than one county.

Due to space limitations, some areas and features such as water bodies, parks, and roads may not be labeled.

SUBJECT AREA SCHOOL DISTRICTS ON MAP SHEET		
TYPE	CODE	NAME
ELM	00120	Athens City Schools
ELM	01140	Etowah City School District
SEC	47107	McMinn County School District in Athens
SEC	47108	McMinn County School District in Etowah
UNI	02820	McMinn County School District