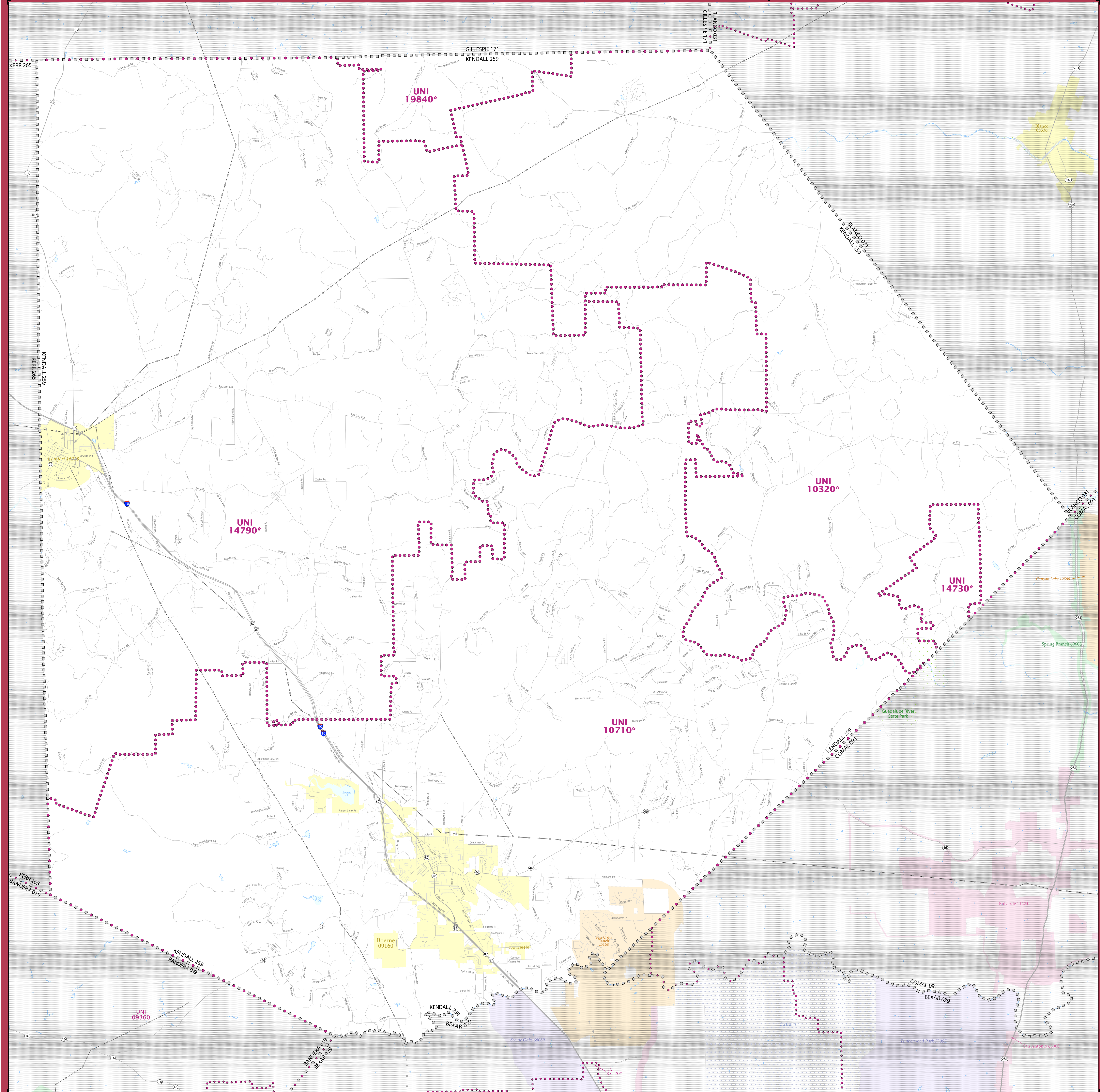


# 2020 CENSUS - SCHOOL DISTRICT REFERENCE MAP: Kendall County, TX



### LEGEND

SYMBOL DESCRIPTION	SYMBOL	LABEL STYLE
International	☆☆☆☆☆	CANADA
Federal American Indian Reservation	.....	L'ANSE RES 1880
Off-Reservation Trust Land	.....	T1880
State American Indian Reservation	.....	Tama Res 9400
Alaska Native Regional Corporation	+++++	NANA ANRC 52120
State (or statistically equivalent entity)		NEW YORK 36
County (or statistically equivalent entity)	□□□□	ERIE 029
Minor Civil Division (MCD) <sup>1,2</sup>	○○○○○	Bristol town 07485
Consolidated City	○○○○○	MILFORD 47500
Incorporated Place <sup>3,4</sup>	.....	Davis 18100
Census Designated Place (CDP) <sup>5</sup>	.....	Incline Village 35100
Unified School District <sup>4</sup>	.....	UNI 03370
Secondary School District <sup>4</sup>	.....	SEC 99965
Elementary School District <sup>4</sup>	.....	ELM 02220

DESCRIPTION	SYMBOL	DESCRIPTION	SYMBOL
Interstate	.....	Water Body	.....
U.S. Highway	.....	Military	.....
State Highway or State Road	.....	National or State Park, Forest, or Recreation Area	.....
Other Road	.....	Inset Area	.....
4WD Trail, Stairway, Alley, Walkway, or Ferry	.....	Outside Subject Area	.....
Railroad	.....		
Pipeline or Power Line	.....		
Ridge or Fence	.....		
Non-labeled Boundary or Feature Not Elsewhere Classified	.....		

Where international, state, county, and/or MCD boundaries coincide, the map shows the boundary symbol for only the highest-ranking of these boundaries.

Geographic area names are followed by either their FIPS or census code.

1 MCD boundaries are shown in the following states in which some or all MCDs function as general-purpose governmental units: Connecticut, Illinois, Indiana, Kansas, Maine, Massachusetts, Michigan, Minnesota, Missouri, Nebraska, New Hampshire, New Jersey, New York, North Dakota, Ohio, Pennsylvania, Rhode Island, South Dakota, Vermont, and Wisconsin. (Note that Illinois and Nebraska have some counties covered by non-governmental precincts and Missouri has most counties covered by non-governmental townships.)

2 A " " following an MCD name denotes a false MCD. A " " following a place name indicates that a false MCD exists with the same name and FIPS code as the place; the false MCD label is not shown.

3 Place label color corresponds to the place fill color.

4 A " " following a label indicates that the school district is in more than one county.

Due to space limitations, some areas and features such as water bodies, parks, and roads may not be labeled.

### SUBJECT AREA SCHOOL DISTRICTS ON MAP SHEET

TYPE	CODE	NAME
UNI	10320	Blanco Independent School District
UNI	10710	Boerne Independent School District
UNI	14730	Comal Independent School District
UNI	14790	Comfort Independent School District
UNI	19840	Fredericksburg Independent School District

All legal boundaries and names are as of January 1, 2020. The boundaries shown on this map are for Census Bureau's statistical data collection and tabulation purposes only; their depiction and designation for statistical purposes does not constitute a determination of jurisdictional authority or rights of ownership or entitlement.

Geographic Vintage: 2020 Census (reference date: January 1, 2020)  
 Data Source: U.S. Census Bureau's MAINTIGR database (TAB20)  
 Map Created by Geography Division: December 22, 2020

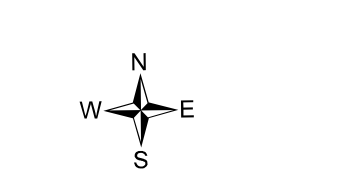
U.S. DEPARTMENT OF COMMERCE U.S. Census Bureau

Projection: Albers Equal Area Conic  
 Datum: NAD 83  
 Spheroid: GRS 80  
 1st Standard Parallel: 27 36 51  
 2nd Standard Parallel: 34 43 24  
 Central Meridian: -100 04 35  
 Latitude of Projection's Origin: 25 50 13  
 False Easting: 0  
 False Northing: 0

The plotted map scale is 1:76812

0 2 4 6 8 10 Kilometers

0 2 4 6 8 10 Miles



Sheet 1 of 1 PARENT sheets  
 Total Sheets: 1 (Index 0; Parent 1; Inset 0)

NAME: Kendall County (259)  
 ENTITY TYPE: County or statistically equivalent entity  
 ST: Texas (48)

2020 CENSUS 50 REF MAP (PARENT)  
 Sheet ID: 25154820901