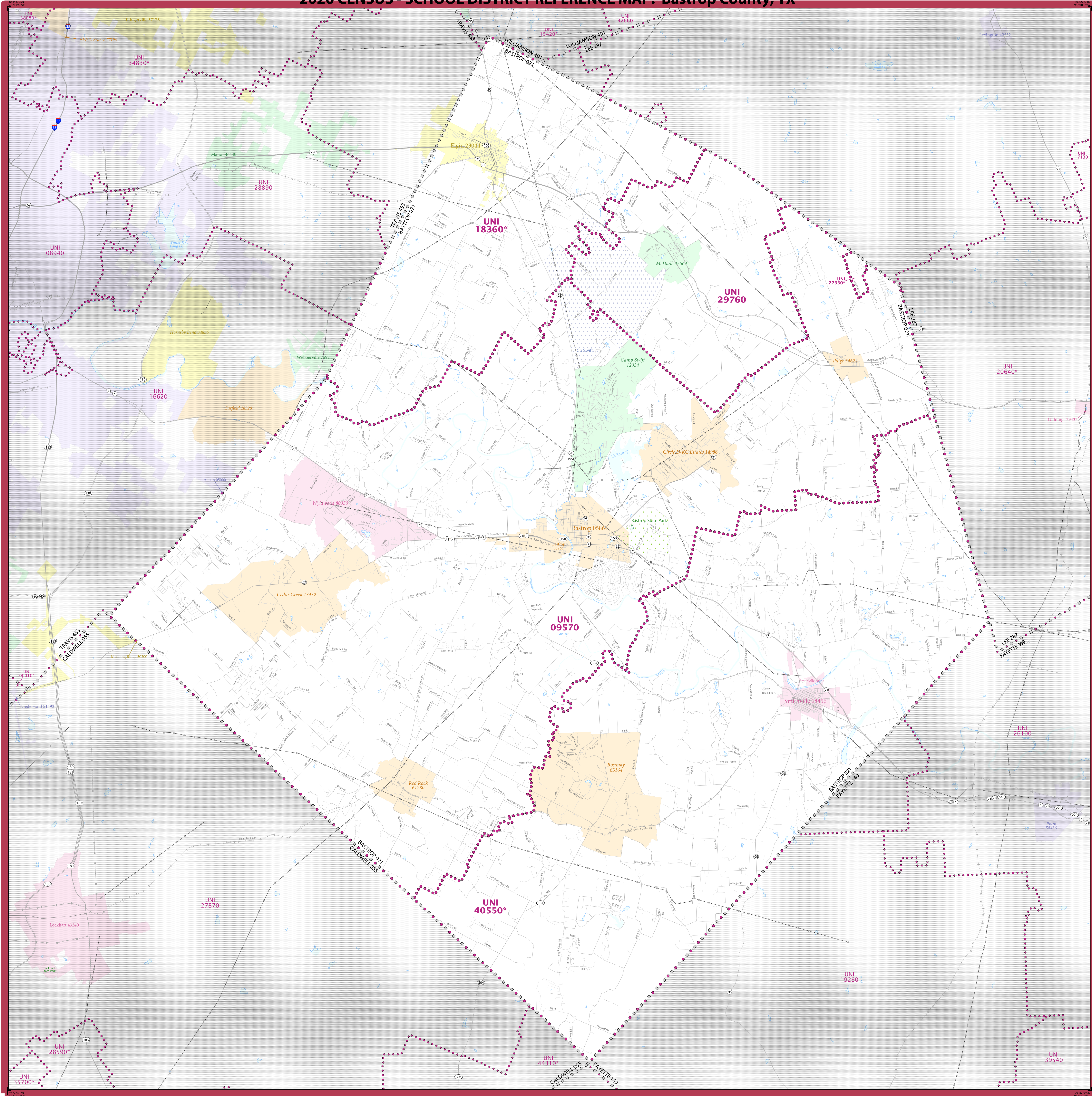


# 2020 CENSUS - SCHOOL DISTRICT REFERENCE MAP: Bastrop County, TX



### LEGEND

SYMBOL DESCRIPTION	SYMBOL	LABEL STYLE
International	☆☆☆☆☆	CANADA
Federal American Indian Reservation	[Dotted Pattern]	L'ANSE RES 1880
Off-Reservation Trust Land	[Dotted Pattern]	T1880
State American Indian Reservation	[Dotted Pattern]	Tama Res 9400
Alaska Native Regional Corporation	+++++	NANA ANRC 52120
State (or statistically equivalent entity)		NEW YORK 36
County (or statistically equivalent entity)	□□□□□	ERIE 029
Minor Civil Division (MCD) <sup>1,2</sup>	○○○○○	Bristol town 07485
Consolidated City	○○○○○	MILFORD 47500
Incorporated Place <sup>3</sup>	[Color Fill]	Davis 18100
Census Designated Place (CDP) <sup>2</sup>	[Color Fill]	Incline Village 35100
Unified School District <sup>4</sup>	[Dotted Pattern]	UNI 03370
Secondary School District <sup>4</sup>	[Color Fill]	SEC 99965
Elementary School District <sup>4</sup>	[Color Fill]	ELM 02220

DESCRIPTION	SYMBOL	DESCRIPTION	SYMBOL
Interstate	[Blue Line]	Water Body	[Blue Area]
U.S. Highway	[Black Line]	Military	[Green Area]
State Highway or State Road	[Black Line]	National or State Park, Forest, or Recreation Area	[Green Area]
Other Road	[Black Line]	Inset Area	[Green Area]
Railroad	[Black Line]	Outside Subject Area	[Grey Area]
Ridge or Fence	[Black Line]		
Navigable Boundary or Feature Not Elsewhere Classified	[Black Line]		

Where international, state, county, and/or MCD boundaries coincide, the map shows the boundary symbol for only the highest-ranking of these boundaries.

Geographic area names are followed by either their FIPS or census code.

- MCD boundaries are shown in the following states in which some or all MCDs function as general-purpose governmental units: Connecticut, Illinois, Indiana, Kansas, Maine, Massachusetts, Michigan, Minnesota, Missouri, Nebraska, New Hampshire, New Jersey, New York, North Dakota, Ohio, Pennsylvania, Rhode Island, South Dakota, Vermont, and Wisconsin. (Note that Illinois and Nebraska have some counties covered by nongovernmental precincts and Missouri has most counties covered by nongovernmental townships.)
- A " " following an MCD name denotes a false MCD. A " " following a place name indicates that a false MCD exists with the same name and FIPS code as the place; the false MCD label is not shown.
- Place label color corresponds to the place fill color.
- A " " following a label indicates that the school district is in more than one county.

Due to space limitations, some areas and features such as water bodies, parks, and roads may not be labeled.

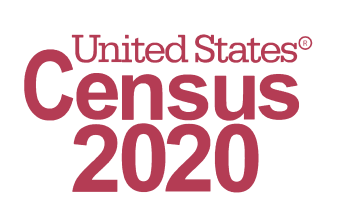
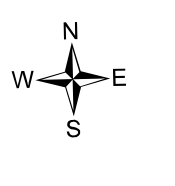
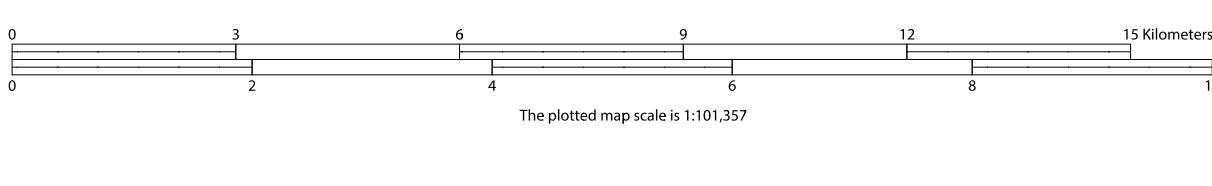
### SUBJECT AREA SCHOOL DISTRICTS ON MAP SHEET

TYPE	CODE	NAME
UNI	09570	Bastrop Independent School District
UNI	18360	Elgin Independent School District
UNI	27330	Levellon Independent School District
UNI	29760	McDade Independent School District
UNI	40550	Smithville Independent School District

All legal boundaries and names are as of January 1, 2020. The boundaries shown on this map are for Census Bureau statistical data collection and tabulation purposes only; their depiction and designation for statistical purposes does not constitute a determination of jurisdictional authority or rights of ownership or entitlement.

Geographic Vintage: 2020 Census (reference date: January 1, 2020)  
 Data Source: U.S. Census Bureau's MAINTIGR database (T4820)  
 Map Created by Geography Division: December 22, 2020

Projection: Albers Equal Area Conic  
 Datum: NAD 83  
 Spheroid: GRS 80  
 1st Standard Parallel: 27 36 51  
 2nd Standard Parallel: 34 43 24  
 Central Meridian: -100 04 35  
 Latitude of Projection's Origin: 25 50 13  
 False Easting: 0  
 False Northing: 0



Sheet 1 of 1 PARENT sheets  
 Total Sheets: 1 (Index 0; Parent 1; Inset 0)

NAME: Bastrop County (021)  
 ENTITY TYPE: County or statistically equivalent entity  
 ST: Texas (48)

2020 CENSUS SD REF MAP (PARENT)  
 Sheet ID: 251548021001