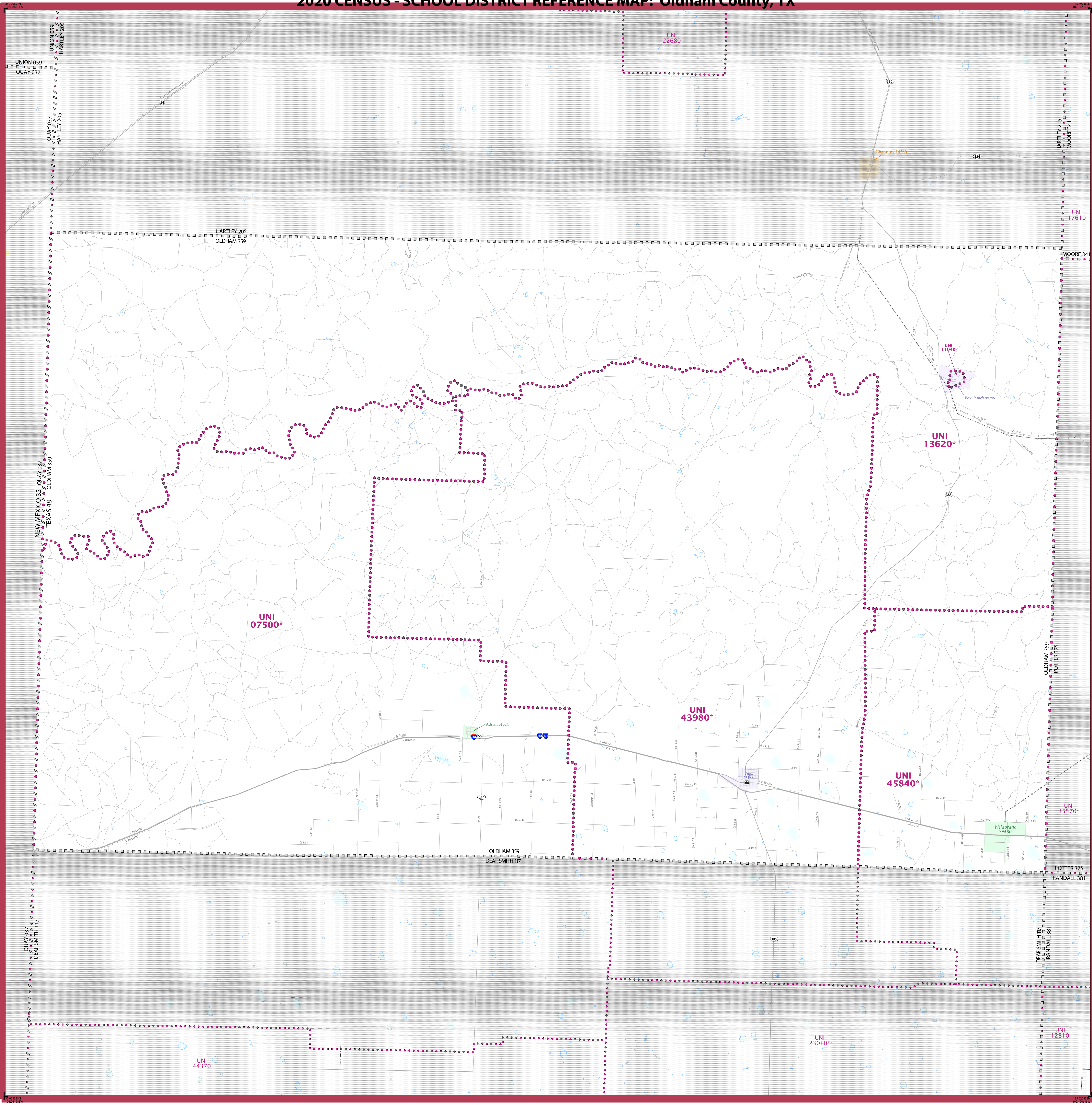
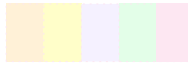
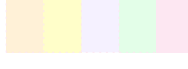




## 2020 CENSUS - SCHOOL DISTRICT REFERENCE MAP: Oldham County, TX



<u>SYMBOL DESCRIPTION</u>	<u>SYMBOL</u>	<u>LABEL STYLE</u>
International	☆☆☆☆☆☆	CANADA
Federal American Indian Reservation	☆☆☆☆☆☆	L'ANSE RES 1880
Off-Reservation Trust Land	☆☆☆☆☆☆	T1880
State American Indian Reservation	☆☆☆☆☆☆	Tama Res 9400
Alaska Native Regional Corporation	++++++	NANA ANRC 52120
State (or statistically equivalent entity)		NEW YORK 36
County (or statistically equivalent entity)		ERIE 029
Minor Civil Division (MCD) 1:2	○○○○○○	Bristol town 07485
Consolidated City	○○○○○○	MILFORD 47500
Incorporated Place <sup>2,3</sup>		Davis 18100
Genus Designated Place (CDP)		<i>Incine Village 35100</i>
Unified School District <sup>4</sup>	•••••	UNI 03370
Secondary School District <sup>4</sup>		SEC 99965
Elementary School District <sup>4</sup>		ELM 02220

DESCRIPTION	SYMBOL	DESCRIPTION	SYMBOL
Interstate		Water Body	
U.S. Highway		Military	
State Highway or State Road		National or State Park, Forest, or Recreation Area	
Other Road		Inset Area	
4WD Trail, Turnway, Alley, Walkway, or Ferry		Outside Subject Area	
Railroad			
Pipeline or Power Line			
Ridge or Fence			
Nonreversible Boundary or Feature Not Elsewhere Classified			

Where international, state, county, and/or MCD boundaries coincide, the map shows the boundary symbol for only the highest-ranking of these boundaries.

Geographic area names are followed by either their FIPS or census code.

1 MCD boundaries are shown in the following states in which some or all MCDs function as general-purpose governmental units: Connecticut, Illinois, Indiana, Kansas, Maine, Massachusetts, Michigan, Minnesota, Missouri, Nebraska, New Hampshire, New Jersey, New York, North Dakota, Ohio, Pennsylvania, Rhode Island, South Dakota, Vermont, and Wisconsin. (Note that Illinois and Nebraska have some counties covered by nongovernmental precincts and Missouri has most counties covered by nongovernmental townships.)

2 A '°' following an MCD name denotes a false MCD. A '°' following a place name indicates that a false MCD exists with the same name and FIPS code as the place; the false MCD label is not shown.

4 A ' \* ' following a label indicates that the school district is in more than one county.

Due to space limitations, some areas and features such as water bodies, parks, and roads may not be labeled.

SUBJECT AREA SCHOOL DISTRICTS ON MAP SHEET	
PE CODE	NAME
07500	Adrian Independent School District
11040	Boys Ranch Independent School District
13620	Channing Independent School District
43980	Vega Independent School District
45840	Wildorado Independent School District

Sheet 1 of 1 PARENT sheets  
Total Sheets: 1 (Index 0; Parent 1; Inset 0)

NAME: Oldham County (359)  
ENTITY TYPE: County or statistically equivalent entity  
STATE: Texas (48)

0 CENSUS SD REF MAP (PARENT)  
etl ID: 251548359001